



ChatChai

SPECIFICATION

OIL IMMERSED TRANSFORMER

1500 KVA. 3 Ph. 50 Hz

24000 - 416 / 240 V.



ChatChai

SPECIFICATION THREE PHASE TRANSFORMER 31/2 Moo 8 Thamai, Krathumban, Samutsakhon

Transformer Specification

Quote. Ref :

Customer :

Project :

Rated powerKVA	1500
Type of transformer	-	Oil immersed (Hermetically sealed)
Standard	-	IEC 60076
Cooling System	-	ONAN
No. Of phase	-	3
FrequencyHz	50
Rate of voltage : PrimaryV.	24000
: SecondaryV.	416/240
Vector group	-	Dyn 11
Tapping Type	-	Off Circuit Tap Changer
No. of steps	-	5
Percentage of tapping	-	+ 2 x 2.5 %
Impedance voltage at 75 C%	6
NO - Load current%	1.6
Ambient temperatureC	40
Average Temperature rise of windingC	65
Average Temperature rise of top oilC	60
Noise level not more thandB	60
No - Load lossWatt	1820
Load loss at 75 CWatt	17850
Efficiency at P.F. = 1	: 25 % of rate power	99.48
	: 50 % of rate power	99.13
	: 75 % of rate power	98.82
	: 100 % of rate power	98.68
Voltage regulation	: at P.F. = 0.8	1.71
	: at P.F. = 0.9	1.52
	: at P.F. = 1.	1.37
Impulse Withstand Voltage	: Primary winding	125
	: Secondary winding	-
Power Frequency	: Primary winding	50
	: Secondary winding	3
Terminal arrangement H.V. Side		Cable
L.V. Side		Cable
Installation on		Pole mounted / Plantform



ChatChai

SPECIFICATION THREE PHASE TRANSFORMER

31/2 Moo 8 Thamai, Krathumban, Samutsakhon

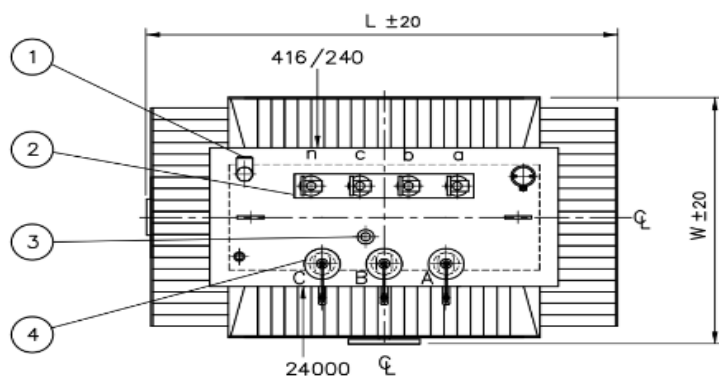
Transformer Specification

Quote. Ref :

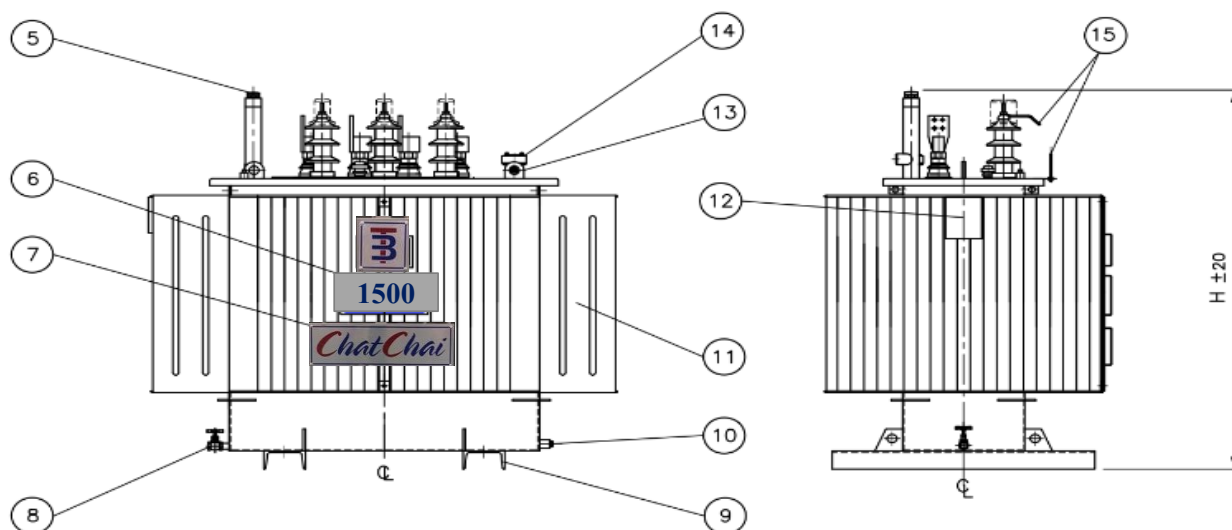
Customer :

Project :

Rated power	1500
Type of transformer	Oil immersed (Hermetically sealed)
Accessories	
H.V. Bushing with terminal connector	Included
L.V. Bushing with terminal connector	Included
Grounding pad or earth terminal	Included
upper filter press sampling valve	Included
Oil drain, filter press sampling valve	Included
Name plate	Included
Arcing Horn	Included
Skid Base	Included
Mechanical pressure relief device	Included (without contact)
Oil level indicator	Included (with contact)
	Included (with contact)
	Included (with contact)
Testing	
- Routine test	
Ratio test at each position of tap	Included
Polarity and phase relation test	Included
Resistance measurement	Included
No - Load loss and exciting current test	Included
Impedance and load loss test	Included
Applied potential test	Included
Induced potential test	Included
Insulation resistance test	Included
Oil test	Included
- Specia test	
Impulse withstand test	Included (Chatchai lab)
Temperature rise test	Included (Chatchai lab)



NO.	DESCRIPTION
1	OIL LEVEL GAUGE
2	LV BUSHING
3	OFF-LOAD TAP CHANGER
4	HV BUSHING with INSULATION CAP
5	PRESSURE RELIEF VALVE
6	TRADE MARK with COMPANY PLATE
7	CAPACITY PLATE
8	OIL DRAN VALVE with PLUG
9	FOUNDATION
10	FARTH TERMINAL
11	CORRUGATED FIN
12	NAME PLATE
13	LIFTING EYES for UNTANKING
14	THERMOMETER
15	ARCHING HORN



NO	DESCRIPTION	QTY.
1	NAMEPLATE WITH CONNECTION DIAGRAM	1
2	HV. BUSHING W / TERMINAL CONNECTOR	3
3	LV. BUSHING W / TERMINAL CONNECTOR	4
4	TANK	1
5	TAP CHANGE	1
6	EARTH TERMINAL	1
7	OIL DRAIN VALAE	1
8	LIFTING EYES ON THE COVER	2
9	OIL LEVEL INDICATOR	1
10	OIL FILLING PIPE	1
11	OIL LEVEL GAUGE	1
12	LOGO	1
13	THERMOMETER POCKET	1
14	ARCING HORN	3

CHATCHAI TRANSFORMER CO.,LTD.

Dimension in millimetres				Total wt.	Oil
	H	L	W	(Kgs.)	(Litres)
	2050	2000	1250	3940	980
DESIGN No.			0013T150024000	S/O No.	A0019060
NAME			TITLE :	OUTLINE DRAWING	
DRN.BY				1500 kVA. 3 Ph. Dyn11	
CHK.BY				24000 - 416 / 240 v.	
APP. BY				TYPE : Hermetical sealed tank	

PRELIMINARY DRAWING

This drawing is for estimation only showing approximate dimensions and should not be used for actual purposes

In case of order a definite drawing will be produced for formal approval