

CHATCHAI

SPECIFICATION

OIL IMMERSED TRANSFORMER

2000 KVA. 3 Ph. 50 Hz

22000 - 400 / 230 V.

Transformer Specification

Quote. Ref :

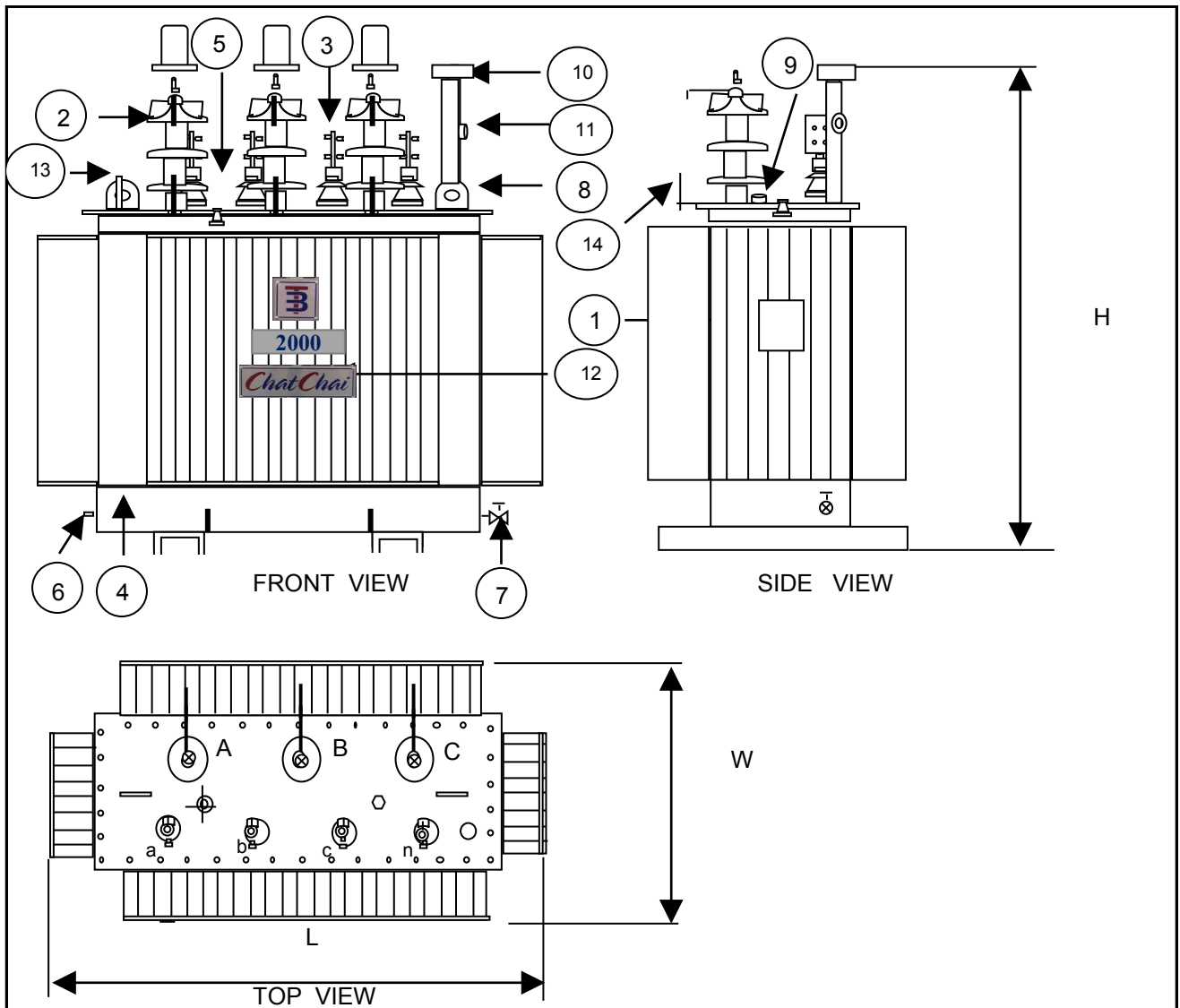
Customer :

Project :

Rated powerKVA	2000
Type of transformer	-	Oil immersed (Hermetically sealed tank)
Standard	-	IEC 76
Cooling System	-	ONAN
No. Of phase	-	3
FrequencyHz	50
Rate of voltage : PrimaryV.	22000
: SecondaryV.	400/230
Vector group	-	Dyn 11
Tapping Type	-	Off Circuit Tap Changer
No. of steps	-	5
Percentage of tapping	-	+ 2 x 2.5 %
Impedance voltage at 75 C%	7.41
NO - Load current%	1
Ambient temperatureC	\pm 40
Average Temperature rise of windingC	65
Average Temperature rise of top oilC	60
Noise level not more thandB	56
No - Load lossWatt	2110
Load loss at 75 CWatt	21600
Efficiency : 25 % of rate power%	98.94
: 50 % of rate power%	98.08
at P.F. = 1 : 75 % of rate power%	98.79
: 100 % of rate power%	98.56
Voltage regulation : at P.F. = 0.8%	3.22
: at P.F. = 0.9%	2.71
: at P.F. = 1.%	1.17
Impulse Withstand : Primary windingKV.	125
Voltage : Secondary windingKV.	-
Power Frequency : Primary windingKV.	50
: Secondary windingKV.	3
Terminal arrangement H.V. Side		Cable
L.V. Side		Cable
Installation on		Pole mounted / Platform

Transformer Specification**Quote. Ref :****Customer :****Project :**

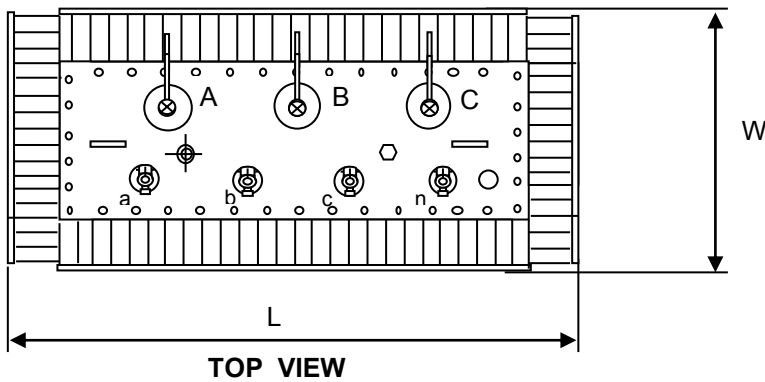
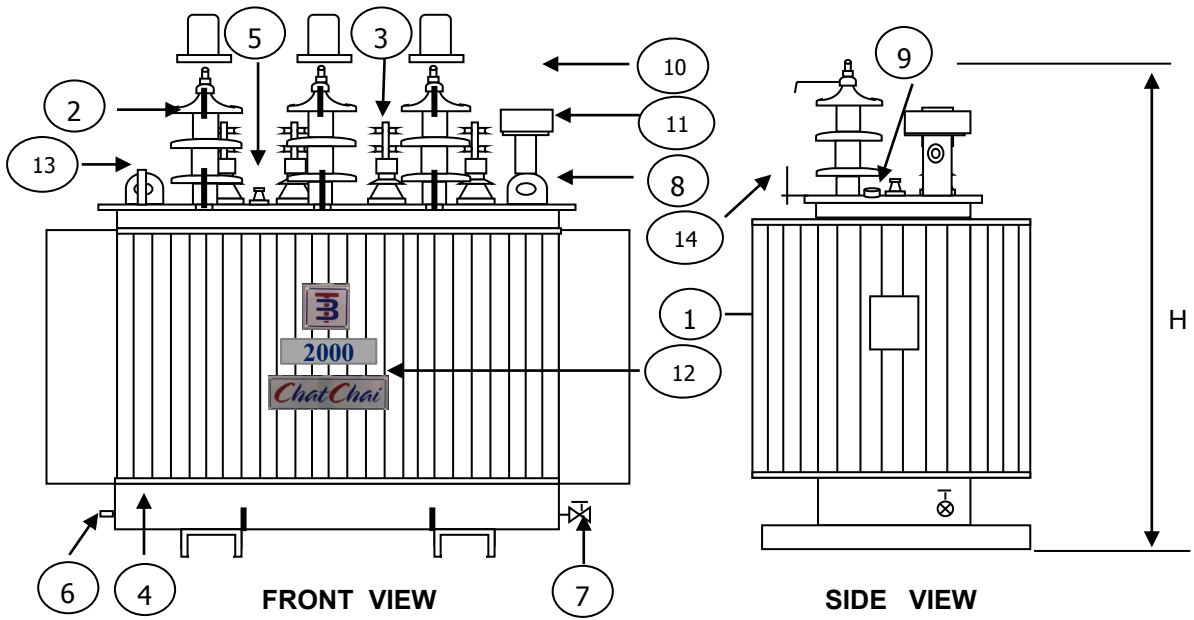
Rated power	2000
Type of transformer	Oil immersed (Hermetically sealed tank)
Accessories	
H.V. Bushing with terminal connector	Included
L.V. Bushing with terminal connector	Included
Grounding pad or earth terminal	Included
upper filter press sampling valve	Included
Oil drain, filter press sampling valve	Included
Name plate	Included
Arcing Horn	Included
Skid Base	Included
Mechanical pressure relief device	Included (without contact)
Oil level indicator	Included (with contact)
	Included (with contact)
	Included (with contact)
Testing	
- Routine test	
Ratio test at each position of tap	Included
Polarity and phase relation test	Included
Resistance measurement	Included
No - Load loss and exciting current test	Included
Impedance and load loss test	Included
Applied potential test	Included
Induced potential test	Included
Insulation resistance test	Included
Oil test	Included
- Special test	
Impulse withstand test	Included
Temperature rise test	Included



NO	DESCRIPTION	QTY.
1	NAMEPLATE WITH CONNECTION DIAGRAM	1
2	HV. BUSHING W / TERMINAL CONNECTOR	3
3	LV. BUSHING W / TERMINAL CONNECTOR	4
4	TANK	1
5	TAP CHANGE	1
6	EARTH TERMINAL	1
7	OIL DRAIN VALVE	1
8	LIFTING EYES ON THE COVER	2
9	OIL LEVEL INDICATOR	1
10	OIL FILLING PIPE	1
11	OIL LEVEL GAUGE	1
12	LOGO	1
13	THERMOMETER POCKET	1
14	ARCING HORN	3

CHATCHAI					
Dimension in millimetres				Total wt.	Oil
	H	L	W	(Kgs.)	(Litres)
	2470 mm	2640 mm	1910 mm	5620	1650
DESIGN No.	001000TR0052003			S/O No.	A52001
NAME				TITLE :	OUTLINE DRAWING
DRN.BY					2000 kVA. 3 Ph. Dyn11
CHK.BY					22000 - 400 / 230
APP. BY				TITLE :	Hermetically sealed tank

PRELIMINARY DRAWING
 This drawing is for estimation only showing approximate dimensions and should not be used for actual purposes
 In case of order a definite drawing will be produced for formal approval



NO	DESCRIPTION	QTY.
1	NAMEPLATE WITH CONNECTION DIAGRAM	1
2	HV. BUSHING W / TERMINAL CONNECTOR	3
3	LV. BUSHING W / TERMINAL CONNECTOR	4
4	TANK	1
5	TAP CHANGE	1
6	EARTH TERMINAL	1
7	OIL DRAIN VALVE	1
8	LIFTING EYES ON THE COVER	2
9	OIL LEVEL INDICATOR	1
10	OIL FILLING PIPE	1
11	OIL LEVEL GAUGE	1
12	LOGO	1
13	THERMOMETER POCKET	1
14	ARCING HORN	3

CHATCHAI						
Dimension in millimetres				Total wt.	Oil	
		H	L	W	(Kgs.)	(Litres)
		1800 mm	2250 mm	1420 mm	4810	1550
DESIGN No. 001000TR0052003				S/O No. A52001		
NAME			TITLE : OUTLINE DRAWING			
DRN.BY			2000 kVA. 3 Ph. Dyn11			
CHK.BY			22000 - 400 / 230			
APP. BY			TYPE : Hermetically sealed tank			

PRELIMINARY DRAWING

This drawing is for estimation only showing approximate dimensions and should not be used for actual purposes

In case of order a definite drawing will be produced for formal approval