

# **CHATCHAI**

**SPECIFICATION  
OIL IMMERSED TRANSFORMER  
2500 KVA. 3 Ph. 50 Hz  
22000 - 400 / 230 V.**



# CHATTHAI TRANSFORMER CO.,LTD

35/4 หมู่ 8 ต. ท่าไม้ อ. กระทุ่มแบน จ. สมุทรสาคร

Tel. 085-2961053 085-3151766

Transformer

Quote.

Customer .

Project :

Rated power	.....KVA	<b>2500</b>	
Type of transformer	-	Oil immersed ( Hermetically sealed tank )	
Standard	-	IEC 76	
Cooling System	-	ONAN	
No. Of phase	-	3	
Frequency	.....Hz	50	
Rate of voltage : Primary	.....V.	22000	
: Secondary	.....V.	400/230	
Vector group	-	Dyn 11	
Tapping Type	-	<b>Off circuit tap changer</b>	
No. of steps	-	5	
Percentage of tapping	-	$\pm 2 \times 2.5 \%$	
Impedance voltage at 75 C	.....%	4	
NO - Load current	.....%	1	
Ambient temperature	.....C	40	
Average Temperature rise of winding	.....C	65	
Average Temperature rise of top oil	.....C	60	
Noise level not more than	.....dB	56	
No - Load loss	.....Watt	3500	
Load loss at 75 C	.....Watt	28500	
Efficiency at P.F. = 1	: 25 % of rate power	.....%	98.94
	: 50 % of rate power	.....%	98.08
	: 75 % of rate power	.....%	98.79
	: 100 % of rate power	.....%	98.56
Voltage regulation	: at P.F. = 0.8	.....%	3.22
	: at P.F. = 0.9	.....%	2.71
	: at P.F. = 1.	.....%	1.17
Impulse Withstand Voltage	: Primary winding	.....KV.	125
	: Secondary winding	.....KV.	-
Power Frequency	: Primary winding	.....KV.	50
	: Secondary winding	.....KV.	3
Terminal arrangement H.V. Side			Cable
L.V. Side			Cable
Installation on			Pole mounted / Platform



# CHATCHAI TRANSFORMER CO.,LTD

35/4 หมู่ 8 ต. ท่าไม้ อ.กระทุ่มแบน จ. สมุทรสาคร

Tel. 085-2961053 085-3151766

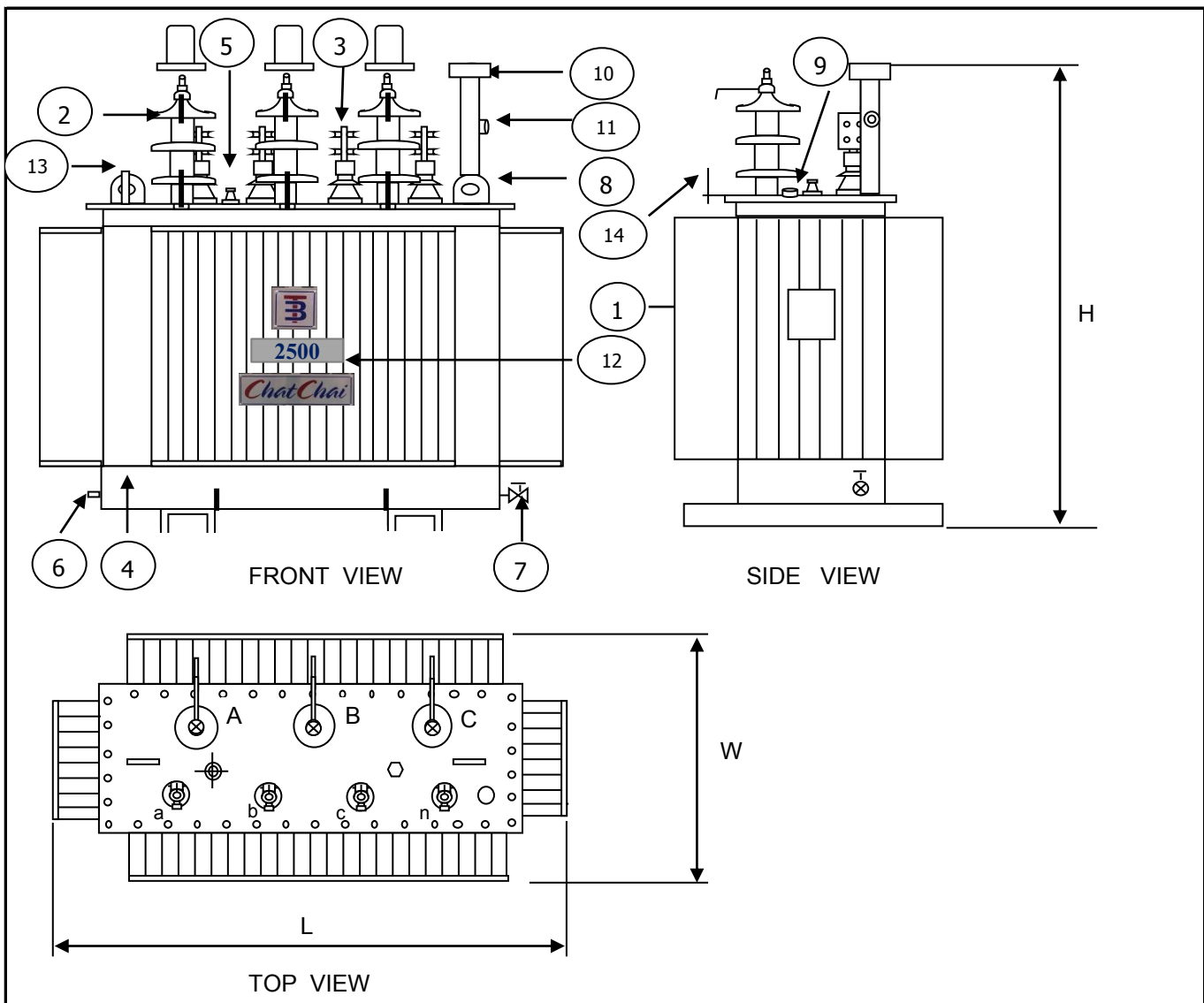
Transf  
tion

Quote.

Customer :

Project :

Rated power	<b>2500</b>
Type of transformer	Oil immersed ( Hermetically sealed tank )
<b>Accessories</b>	
H.V. Bushing with terminal connector	Included
L.V. Bushing with terminal connector	Included
Grounding pad or earth terminal	Included
upper filter press sampling valve	Included
Oil drain, filter press sampling valve	Included
Name plate	Included
Arcing Horn	Included
Skid Base	Included
Mechanical pressure relief device	Included ( without contact )
Oil level indicator	Included ( with contact )
	Included ( with contact )
	Included ( with contact )
<b>Testing</b>	
<b>- Routine test</b>	
Ratio test at each position of tap	Included
Polarity and phase relation test	Included
Resistance measurement	Included
No - Load loss and exciting current test	Included
Impedance and load loss test	Included
Applied potential test	Included
Induced potential test	Included
Insulation resistance test	Included
Oil test	Included
<b>- Special test</b>	
Impulse withstand test	Included ( TR lab )
Temperature rise test	Included ( TR lab )



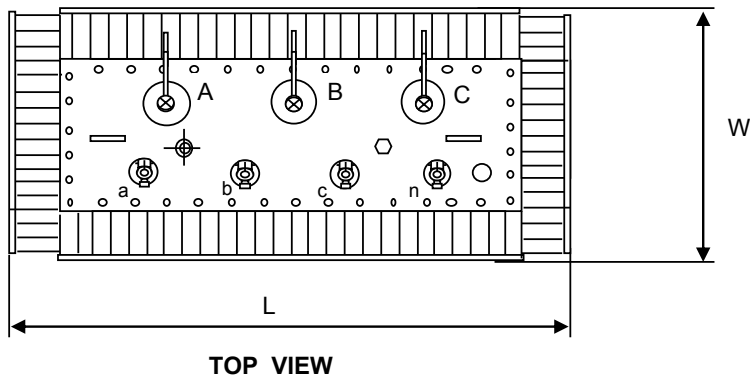
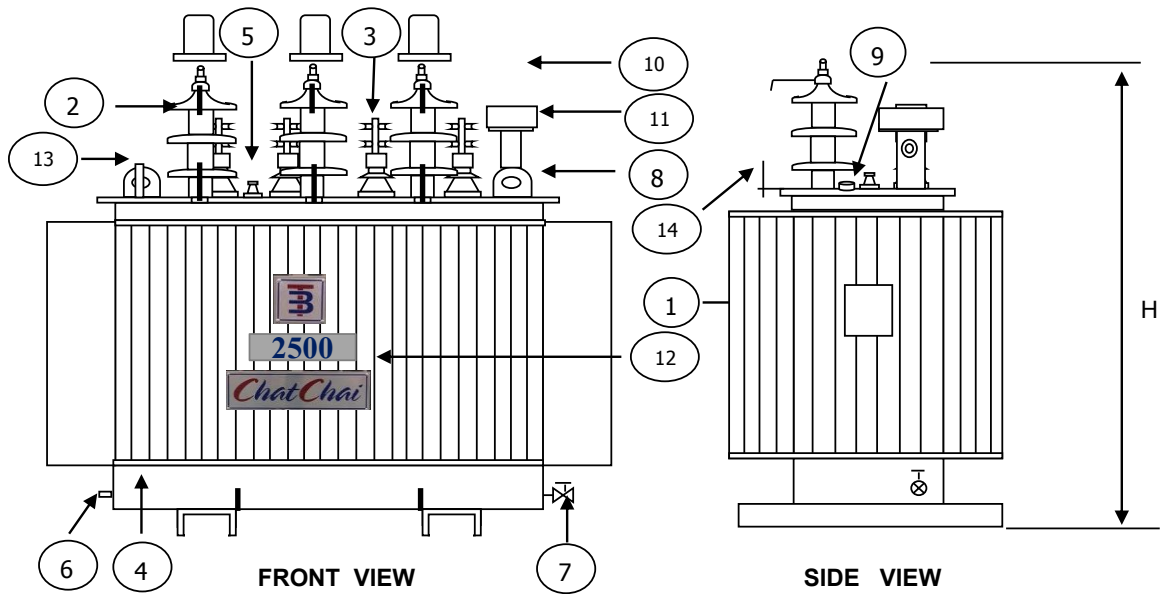
NO	DESCRIPTION	QTY.
1	NAMEPLATE WITH CONNECTION DIAGRAM	1
2	HV. BUSHING W / TERMINAL CONNECTOR	3
3	LV. BUSHING W / TERMINAL CONNECTOR	4
4	TANK	1
5	TAP CHANGE	1
6	EARTH TERMINAL	1
7	OIL DRAIN VALAE	1
8	LIFTING EYES ON THE COVER	2
9	OIL LEVEL INDICATOR	1
10	OIL FILLING PIPE	1
11	OIL LEVEL GAUGE	1
12	LOGO	1
13	THERMOMETER POCKET	1
14	ARCING HORN	3

จัดรัชย์ หม้อแปลงไฟฟ้า					
Dimension in millimetres				Total wt.	Oil
	H	L	W	( Kgs.)	( Litres )
	2780 mm	2680 mm	1970 mm	7820	2600
DESIGN No.	002500TR0052003			S/O No.	A52001
NAME				TITLE :	OUTLINE DRAWING
DRN.BY					2500 kVA. 3 Ph. Dyn11
CHK.BY					22000 - 400 / 230 v.
APP. BY					TYPE : Hermetically sealed tank

**PRELIMINARY DRAWING**

This drawing is for estimation only showing approximate dimensions and should not be used for actual purposes

In case of order a definite drawing will be produced for formal approval



NO	DESCRIPTION	QTY.
1	NAMEPLATE WITH CONNECTION DIAGRAM	1
2	HV. BUSHING W / TERMINAL CONNECTOR	3
3	LV. BUSHING W / TERMINAL CONNECTOR	4
4	TANK	1
5	TAP CHANGE	1
6	EARTH TERMINAL	1
7	OIL DRAIN VALAE	1
8	LIFTING EYES ON THE COVER	2
9	OIL LEVEL INDICATOR	1
10	OIL FILLING PIPE	1
11	OIL LEVEL GAUGE	1
12	LOGO	1
13	THERMOMETER POCKET	1
14	ARCING HORN	3

จัดรับ หม้อแปลงไฟฟ้า					
Dimension in millimetres				Total wt.	Oil
	H	L	W	( Kgs.)	( Litres )
	2780 mm	2680 mm	1970 mm	6280	1980
DESIGN No.	002500TR0052003			S/O No.	A52001
NAME	TITLE : OUTLINE DRAWING				
DRN.BY	2500 kVA. 3 Ph. Dyn11				
CHK.BY	22000 - 400 / 230 v.				
APP. BY	TYPE : Hermetical sealed tank				

**PRELIMINARY DRAWING**

This drawing is for estimation only showing approximate dimensions and should not be used for actual purposes

In case of order a definite drawing will be produced for formal approval