

CHATCHAI

SPECIFICATION

OIL IMMERSED TRANSFORMER

500 KVA. 3 Ph. 50 Hz

24000 - 416 / 240 V.



CHATCHAI TRANSFORMER CO.,LTD

35/4 หมู่ 8 ต. ท่าไม้ อ. กระทุ่มแบน จ. สมุทรสาคร

Tel. 085-2961053 085-3151766

Tr: ication

Qu

Cu

Project :

Rated powerKVA	500
Type of transformer	-	Oil immersed (CONSERVATOR TANK)
Standard	-	IEC 76
Cooling System	-	ONAN
No. Of phase	-	3
FrequencyHz	50
Rate of voltage : PrimaryV.	24000
: SecondaryV.	416/240
Vector group	-	Dyn 11
Tapping Type	-	Off Circuit Tap Changer
No. of steps	-	5
Percentage of tapping	-	- 4 x 2.5 %
Impedance voltage at 75 C%	4
NO - Load current%	1
Ambient temperatureC	40
Average Temperature rise of windingC	65
Average Temperature rise of top oilC	60
Noise level not more thandB	56
No - Load lossWatt	1100
Load loss at 75 CWatt	4950
: 25 % of rate power%	98.94
Efficiency : 50 % of rate power%	98.08
at P.F. = 1 : 75 % of rate power%	98.79
: 100 % of rate power%	98.56
Voltage regulation : at P.F. = 0.8%	3.22
: at P.F. = 0.9%	2.71
: at P.F. = 1.%	1.17
Impulse Withstand : Primary windingKV.	125
Voltage : Secondary windingKV.	-
Power Frequency : Primary windingKV.	50
: Secondary windingKV.	3
Terminal arrangement H.V. Side		Cable
L.V. Side		Cable
Installation on		Pole mounted / Plantform



CHATCHAI TRANSFORMER CO.,LTD

35/4 หมู่ 8 ต. ท่าไม้ อ. กระทุ่มแบน จ. สมุทรสาคร

Tel. 085-2961053 085-3151766

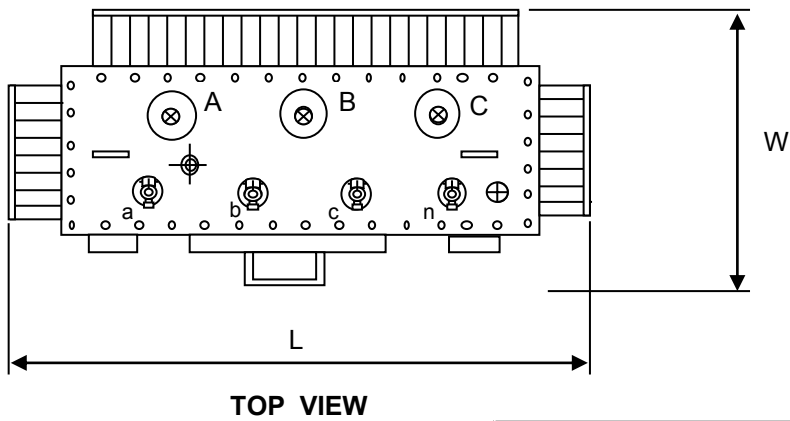
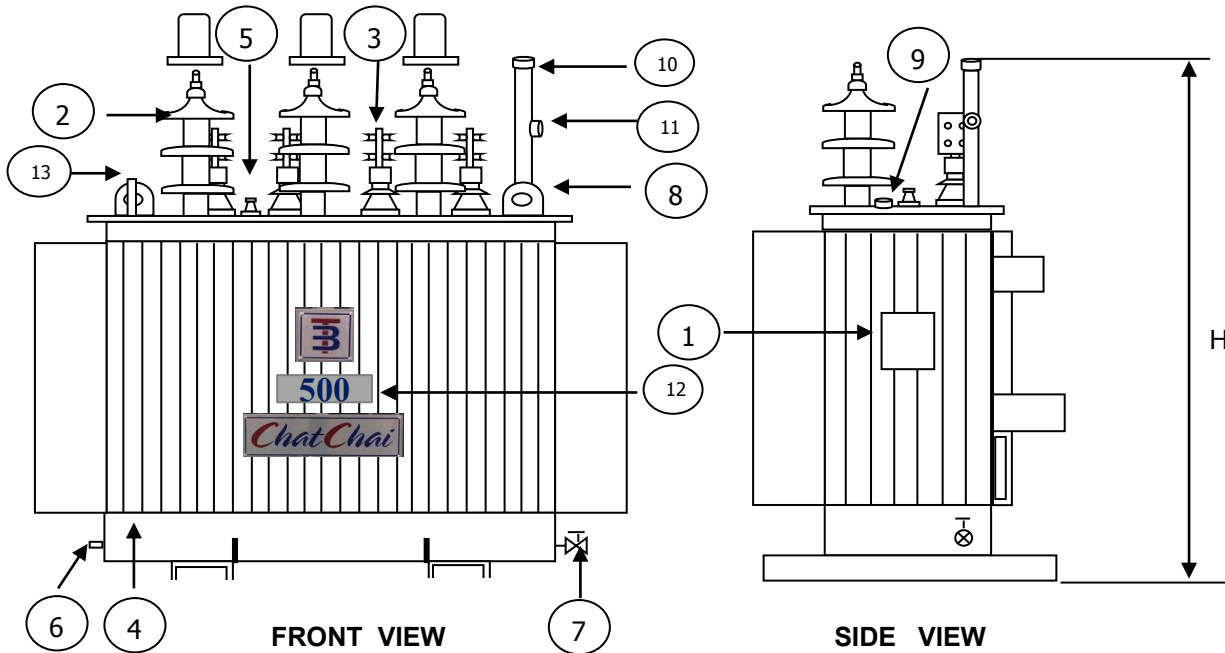
Tr: ication

Quote. Ref :

Customer :

Project :

Rated power	500
Type of transformer	Oil immersed (CONSERVATOR TANK)
Accessories	
H.V. Bushing with terminal connector	Included
L.V. Bushing with terminal connector	Included
Grounding pad or earth terminal	Included
upper filter press sampling valve	Included
Oil drain, filter press sampling valve	Included
Name plate	Included
Arcing Horn	Included
Skid Base	Included
Mechanical pressure relief device	Included (without contact)
Oil level indicator	Included (with contact)
	Included (with contact)
	Included (with contact)
Testing	
- Routine test	
Ratio test at each position of tap	Included
Polarity and phase relation test	Included
Resistance measurement	Included
No - Load loss and exciting current test	Included
Impedance and load loss test	Included
Applied potential test	Included
Induced potential test	Included
Insulation resistance test	Included
Oil test	Included
- Specia test	
Impulse withstand test	Included (Thaicenter lab)
Temperature rise test	Included (Thaicenter lab)



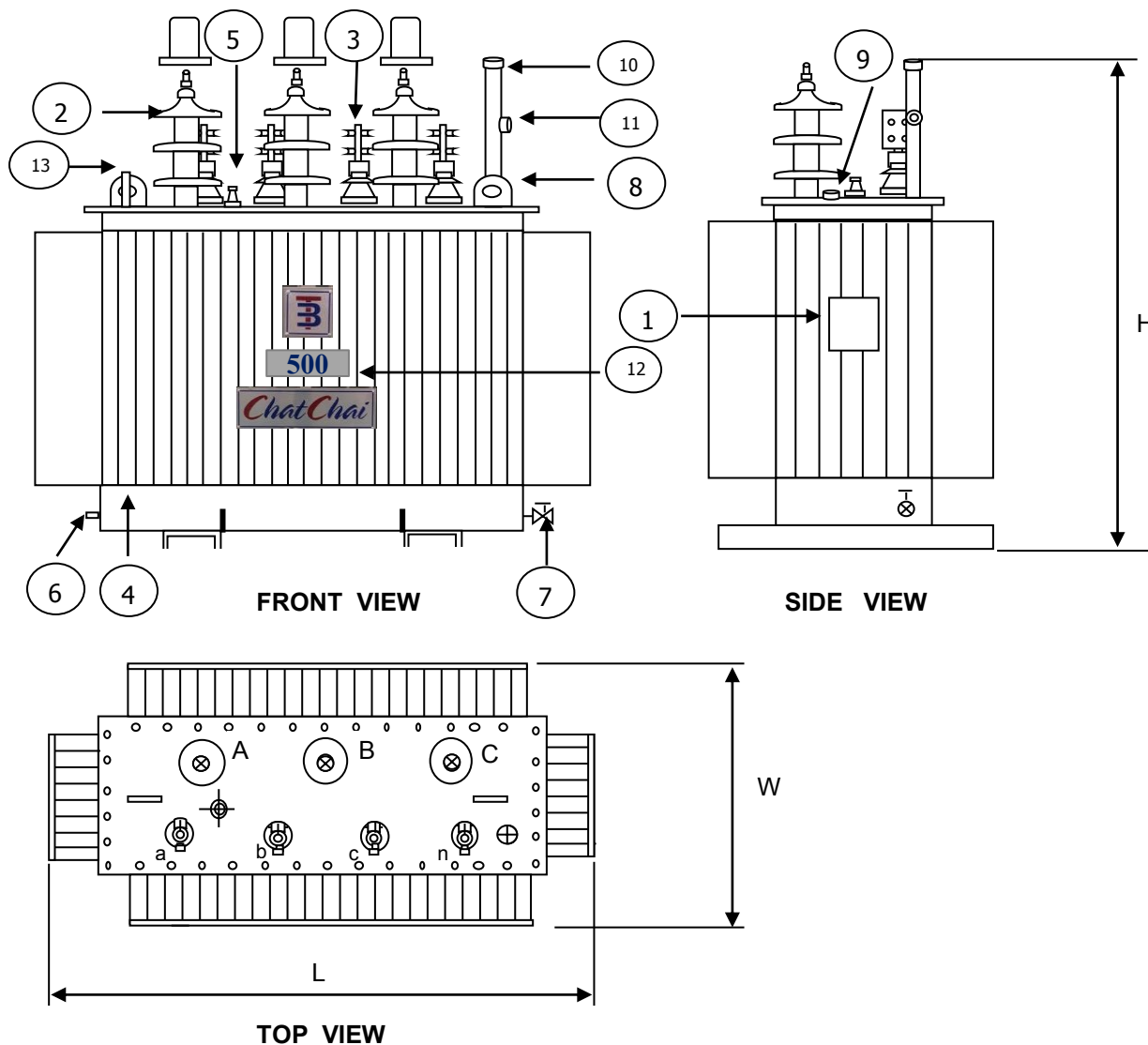
NO	DESCRIPTION	QTY.
1	NAMEPLATE WITH CONNECTION DIAGRAM	1
2	HV. BUSHING W / TERMINAL CONNECTOR	3
3	LV. BUSHING W / TERMINAL CONNECTOR	4
4	TANK	1
5	TAP CHANGE	1
6	EARTH TERMINAL	1
7	OIL DRAIN VALAE	1
8	LIFTING EYES ON THE COVER	2
9	OIL LEVEL INDICATOR	1
10	OIL FILLING PIPE	1
11	OIL LEVEL GAUGE	1
12	LOGO	1
13	THERMOMETER POCKET	1

CHATCHAI					
Dimension in millimetres				Total wt.	Oil
	H	L	W	(Kgs.)	(Litres)
	2470 mm	2640 mm	1910 mm	5620	1650
DESIGN No. 0010TR500				S/O No.	A001-500
NAME			TITLE :	OUTLINE DRAWING	
DRN.BY				500 kVA. 3 Ph.Dyn11	
CHK.BY				24000 - 416 / 240 v.	
APP. BY				TYPE : Hermetically sealed tank	

PRELIMINARY DRAWING

This drawing is for estimation only showing approximate dimensions and should not be used for actual purposes

In case of order a definite drawing will be produced for formal approval



NO	DESCRIPTION	QTY.
1	NAMEPLATE WITH CONNECTION DIAGRAM	1
2	HV. BUSHING W / TERMINAL CONNECTOR	3
3	LV. BUSHING W / TERMINAL CONNECTOR	4
4	TANK	1
5	TAP CHANGE	1
6	EARTH TERMINAL	1
7	OIL DRAIN VALVE	1
8	LIFTING EYES ON THE COVER	2
9	OIL LEVEL INDICATOR	1
10	OIL FILLING PIPE	1
11	OIL LEVEL GAUGE	1
12	LOGO	1
13	THERMOMETER POCKET	1

CHATCHAI

Dimension in millimetres				Total wt.	Oil
	H	L	W	(Kgs.)	(Litres)
	1600 mm	1700 mm	1000 mm	1850	530
DESIGN No. 0010TR500				S/O No.	A001-500
NAME			TITLE : 500 kVA. 3 Ph.Dyn11 24000 - 416 / 240 v. TYPE : Hermetically sealed tank		
DRN.BY					
CHK.BY					
APP. BY					

PRELIMINARY DRAWING

This drawing is for estimation only showing approximate dimensions and should not be used for actual purposes. In case of order a definite drawing will be produced for formal approval.