

CHATCHAI

SPECIFICATION

OIL IMMERSED TRANSFORMER

630 KVA. 3 Ph. 50 Hz

22000 - 400 / 230 V.

CHATCHAI

SPECIFICATION THREE PHASE TRANSFORMER

31/2 Moo 8 Tarmai Karthumbaen Samutsakhon

Tel. 085-2961053

Transformer Specification

Quote. Ref :

Customer :

Project :

Rated powerKVA	630	
Type of transformer	-	Oil immersed (Hermeticall sealed tank)	
Standard	-	IEC 76	
Cooling System	-	ONAN	
No. Of phase	-	3	
FrequencyHz	50	
Rate of voltage : PrimaryV.	22000	
: SecondaryV.	400/230	
Vector group	-	Dyn 11	
Tapping Type	-	Off circuit tap changer	
No. of steps	-	5	
Percentage of tapping	-	± 2 x 2.5 %	
Impedance voltage at 75 C%	4	
NO - Load current%	1	
Ambient temperatureC	40	
Average Temperature rise of windingC	65	
Average Temperature rise of top oilC	60	
Noise level not more thandB	56	
No - Load lossWatt	1010	
Load loss at 75 CWatt	5850	
Efficiency at P.F. = 1	: 25 % of rate power%	98.94
	: 50 % of rate power%	98.08
	: 75 % of rate power%	98.79
	: 100 % of rate power%	98.56
Voltage regulation	: at P.F. = 0.8%	3.22
	: at P.F. = 0.9%	2.71
	: at P.F. = 1.%	1.17
Impulse Withstand	: Primary windingKV.	125
Voltage	: Secondary windingKV.	-
Power Frequency	: Primary windingKV.	50
	: Secondary windingKV.	3
Terminal arrangement H.V. Side		Cable	
L.V. Side		Cable	
Installation on		Pole mounted / Plantform	

CHATCHAI

SPECIFICATION THREE PHASE TRANSFORMER
31/2 Moo 8 Tarmai Karthumbaen Samutsakhon
Tel. 085-2961053

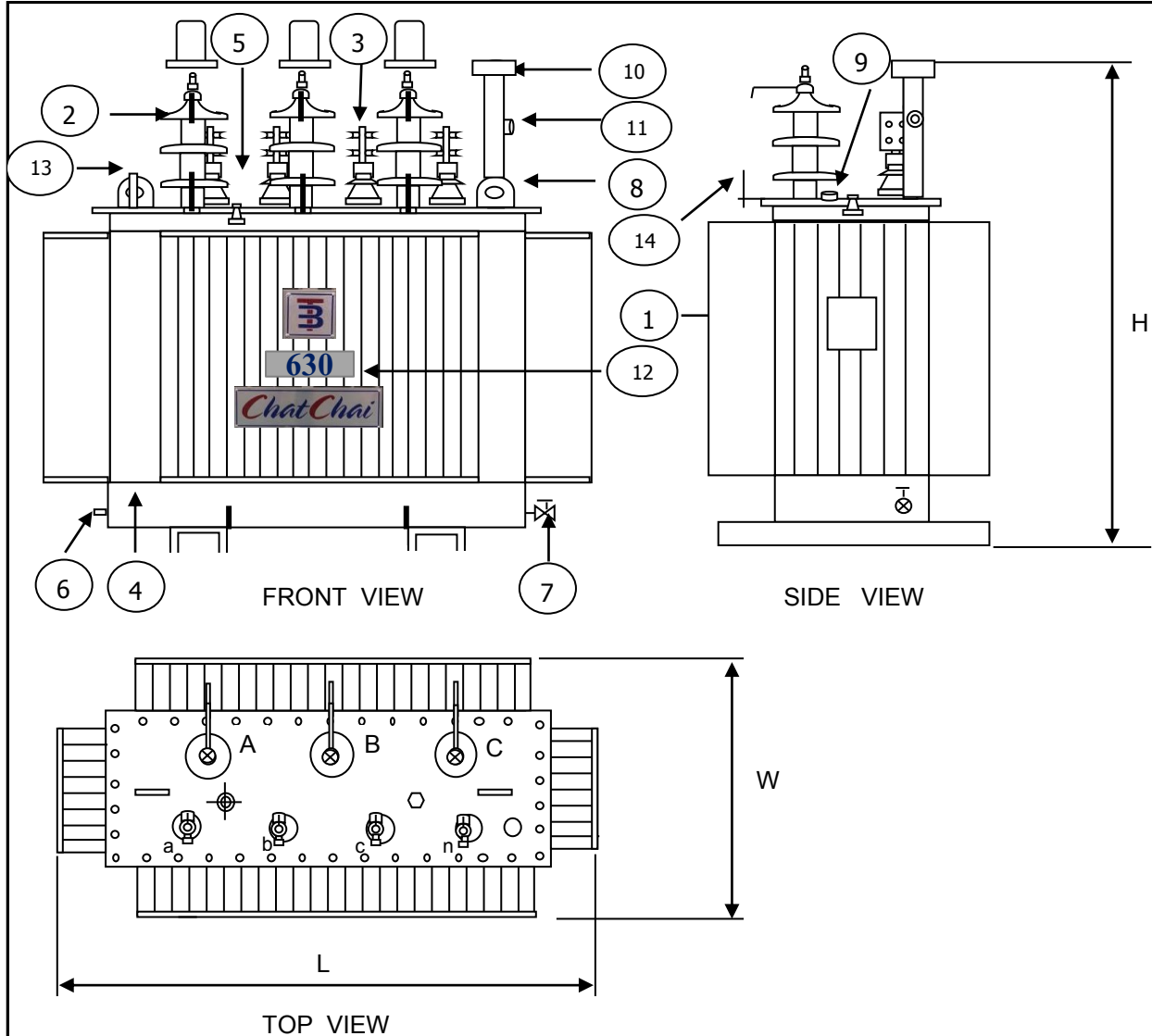
Transformer Specification

Quote. Ref :

Customer :

Project :

Rated power	630
Type of transformer	Oil immersed (Hermetically sealed tank)
Accessories	
H.V. Bushing with terminal connector	Included
L.V. Bushing with terminal connector	Included
Grounding pad or earth terminal	Included
upper filter press sampling valve	Included
Oil drain, filter press sampling valve	Included
Name plate	Included
Arcing Horn	Included
Skid Base	Included
Mechanical pressure relief device	Included (without contact)
Oil level indicator	Included (with contact)
	Included (with contact)
	Included (with contact)
Testing	
- Routine test	
Ratio test at each position of tap	Included
Polarity and phase relation test	Included
Resistance measurement	Included
No - Load loss and exciting current test	Included
Impedance and load loss test	Included
Applied potential test	Included
Induced potential test	Included
Insulation resistance test	Included
Oil test	Included
- Special test	
Impulse withstand test	Included (CHAT CHAI lab)
Temperature rise test	Included (CHAT CHAI lab)



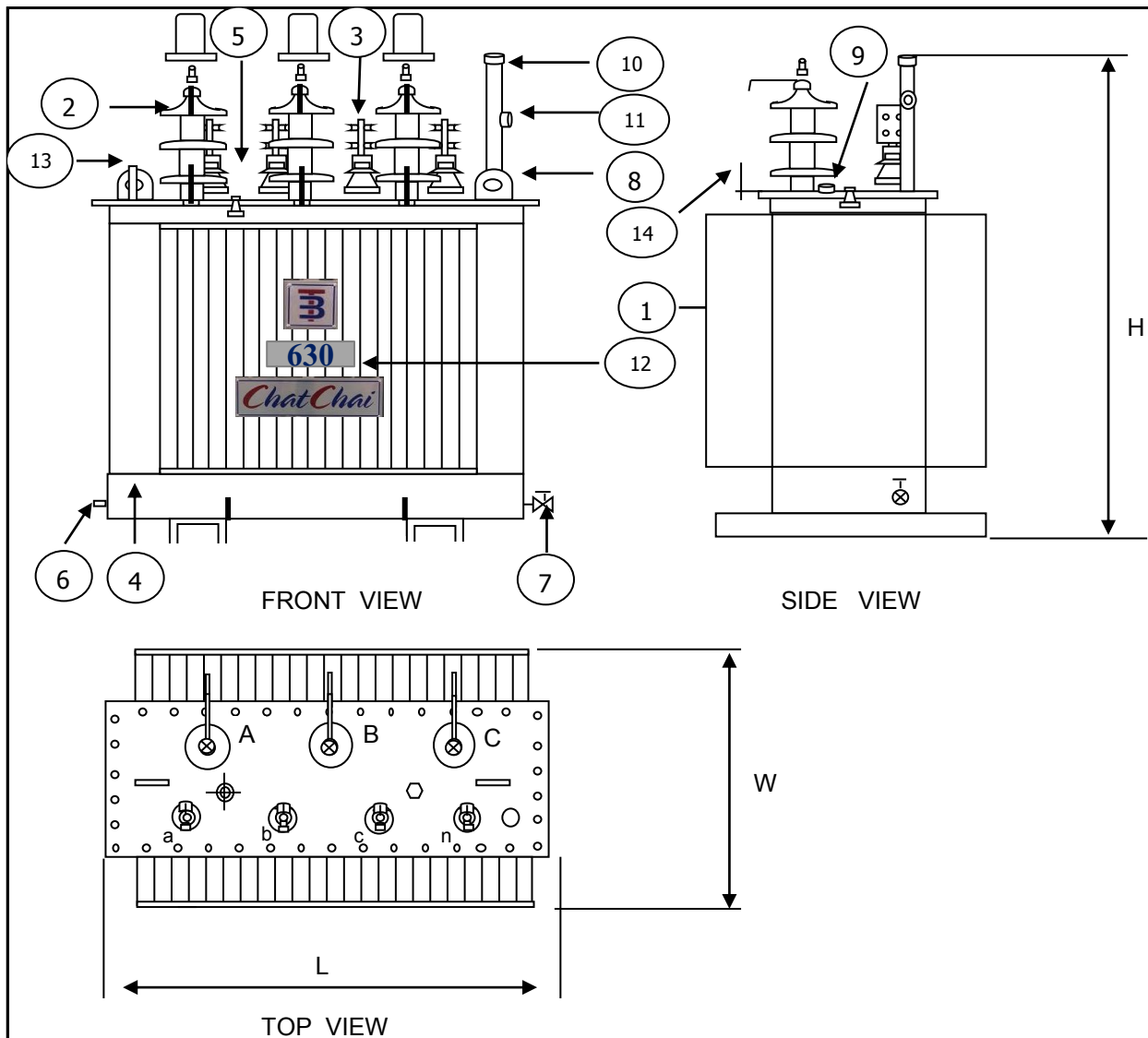
NO	DESCRIPTION	QTY.
1	NAMEPLATE WITH CONNECTION DIAGRAM	1
2	HV. BUSHING W / TERMINAL CONNECTOR	3
3	LV. BUSHING W / TERMINAL CONNECTOR	4
4	TANK	1
5	TAP CHANGE	1
6	EARTH TERMINAL	1
7	OIL DRAIN VALVE	1
8	LIFTING EYES ON THE COVER	2
9	OIL LEVEL INDICATOR	1
10	OIL FILLING PIPE	1
11	OIL LEVEL GAUGE	1
12	LOGO	1
13	THERMOMETER POCKET	1
14	ARCING HORN	3

CHATCHAI					
Dimension in millimetres				Total wt.	Oil
	H	L	W	(Kgs.)	(Litres)
	1780	1690	920	1880	520
DESIGN No. 001000TR0052003				S/O No.	A52001
NAME			TITLE : OUTLINE DRAWING 630 kVA. 3 Ph. Dyn11 22000 - 400 / 230 v. TYPE : Hermetically sealed tank		
DRN.BY					
CHK.BY					
APP. BY					

PRELIMINARY DRAWING

This drawing is for estimation only showing approximate dimensions and should not be used for actual purposes

In case of order a definite drawing will be produced for formal approval



NO	DESCRIPTION	QTY.
1	NAMEPLATE WITH CONNECTION DIAGRAM	1
2	HV. BUSHING W / TERMINAL CONNECTOR	3
3	LV. BUSHING W / TERMINAL CONNECTOR	4
4	TANK	1
5	TAP CHANGE	1
6	EARTH TERMINAL	1
7	OIL DRAIN VALVE	1
8	LIFTING EYES ON THE COVER	2
9	OIL LEVEL INDICATOR	1
10	OIL FILLING PIPE	1
11	OIL LEVEL GAUGE	1
12	LOGO	1
13	THERMOMETER POCKET	1
14	ARCING HORN	3

CHATCHAI					
Dimension in millimetres				Total wt.	Oil
	H	L	W	(Kgs.)	(Litres)
	1780	1690	920	1880	520
DESIGN No. 001000TR0052003				S/O No.	A52001
NAME			TITLE : OUTLINE DRAWING 630 kVA. 3 Ph. Dyn11 22000 - 400 / 230 v. TYPE : Hermetically sealed tank		
DRN.BY					
CHK.BY					
APP. BY					

PRELIMINARY DRAWING

This drawing is for estimation only showing approximate dimensions and should not be used for actual purposes

In case of order a definite drawing will be produced for formal approval